



ESV-SPIRIT 5800

ICU Ventilator



INTENSIVE CARES



ESV-SPIRIT 5800

ICU ventilator



The ESV-SPIRIT 5800 is an advanced turbine ventilator for provide acute respiratory support for adult, pediatric and neonatal use.

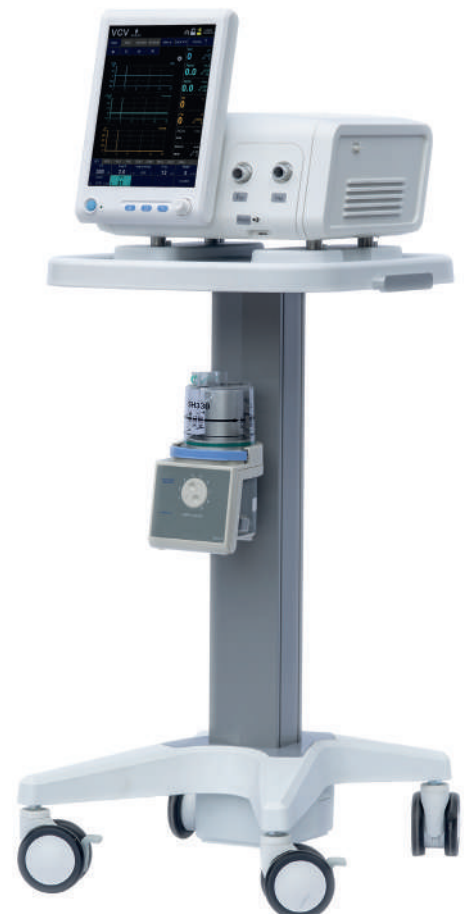
Excellent ventilation performance and comprehensive monitoring capabilities adapt to various clinical requirements.

NEW generation of ventilator

- Molding production. light structure.
- Turbine driven machine.
- 15.1-inch touch screen.
- New interface design with user friendly layout and color assortment.
- Intelligence operating system.
- Can display 3 types of waveform in same interface.
- 3 level of audio and visual alarm indication, adjustable sound volume.

Ventilation performance

- Integrated turbine design can continuous delivery high low more than 220L/min with rapid response of compensation.
- Comprehensive ventilation modes for volume and pressure based, with selection of pressure support, spontaneous breath and non-invasive ventilation. Ventilator is applicable for wide range of patients and clinical situations.
- Quick response for patient's trigger which improved the synchrony between patient-ventilator.
- Graphic capabilities for trends and event record, long time monitoring for all types of ventilation parameters.
- Provide respiratory support from neonatal to adult.



TECHNICAL FEATURES

Dimensions(LxWxH)	40x42x36cm (Main unit) 53x53x133cm (with Trolley)
Weight	Approximately 13kg (Main unit) Approximately 26kg (with Trolley)
Display	
Display size	15.1 inch TFT touch screen
Display Resolution	1280x800 pixels
Brightness	Adjustable
Gas Supply	
Gas Supply	Medical-grade Oxygen
Input pressure	280-600kpa
Power & Battery	
Input Voltage	100-240V
Input Frequency	50/60Hz
Input Current	2.5A Max
Battery type	Built-in Lithium-ion Battery, 12V
Ventilation Specification	
Ventilation Type	IV&NIV
Patient Type	Adult, Pediatric, Neonatal
Ventilation modes	VCV (Volume Control Ventilation) AC-V (Assist Control-Volume Ventilation) SIMV-V (Synchronized Intermittent Mandatory Ventilation-Volume) PA-VC (Pressure Auto-Volume Control) PCV (Pressure Control Ventilation) AC-P (Assist Control-Pressure Ventilation) SIMV-P (Pressure Synchronized Intermittent Mandatory Ventilation) PSV (Pressure Support Ventilation) CPAP (Continuous Positive Airway Pressure) BIPAP (Bilevel Positive Airway Pressure) APNEA APRV** (Airway Pressure Release Ventilation)
Assistant therapy	
For	Nebulization, O ₂ Remedy
Real Time Graphics	
Waveforms	Pressure-time Waveform Flow-time Waveform Volume-time Waveform (Waveforms with freeze function)
Loops	Pressure-volume Loop Flow-time Loop Pressure-flow Loop (Loops with freeze, Zoom in&out, comparison function)
Waveforms and loops display	Could simultaneous display 3 waveforms and 3 loops

** = Optional



Controlled Parameters

VT	2-2000 mL
MV	250-15000 ml/min
Min Tinsp/Texp	150-1000 ms
Respiratory rate	4-200 bpm
PEEP	0-40 cm H ₂ O
Max Inspiration pressure	90cm H ₂ O
FiO₂	21-100 Vol%
Flow-trigger	0.5-30 L/min
Pressure-trigger	-20-20cm H ₂ O
Sigh	On/Off, 1/5 times every 100 breath cycle

Monitoring Parameters

Parameters	VTe mand, VTe spon, VTi mand, VTi spon, MVemand, MVe spon, MVimand, MVi spon, MVe total, RR mand, RR spon., Tinsp Texp, Ppeak, Pplat, PEEP, Pmean, FiO ₂ , Vleak, Flowpeak_insp, Flowpeak_exp, Pmin, RSBI, P0.1, C, R, RCinsp, RCexp, WOB
-------------------	--

O₂ Remedy

Oxygen concentration	21%-100%
Flow	4-60L/min

Trend & Event Log

Trend Length	72 hrs for monitoring parameters
Event Log	3000 logs

Communication Interface

Communication Interface	HDMI, Ethernet, USB, CO ₂ Module Connector**
--------------------------------	---

Environmental operating conditions

Quantity	Range
Temperature (around module)	-20°C - + 60°C
Operating temperature (outside) gas inlet	-20°C - + 50°C
Relative air humidity	5-95% R.H.
Ambient Air Pressure	500-1100 mbar
Noise generation	< 45dB

** = Optional



ESSE3 srl, Via Garibaldi 30
14022 Castelnuovo D.B. (AT)
Tel +39 011 99 27 706
Fax +39 011 99 27 506
e-mail: danielec@esse3-medical.com
web: www.esse3.dreamgest.com

