

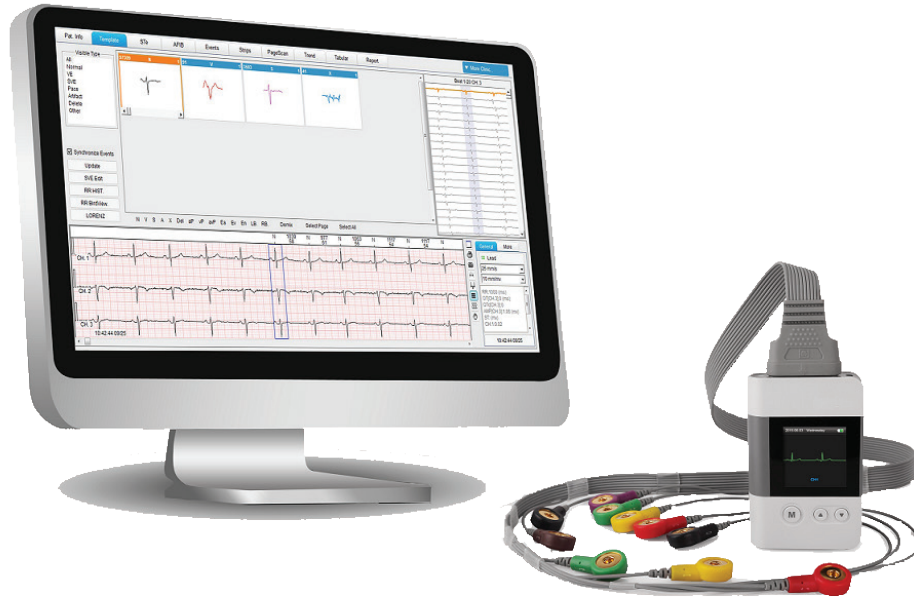


DATA SHEET



Model: ESSE-3 & ESSE-12

ECG Holter



Features

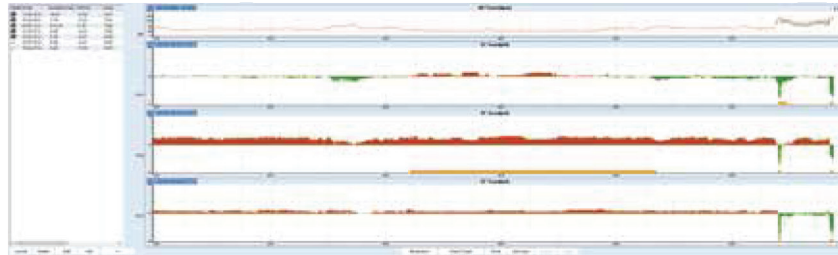
Recorder	<p>ESSE-2003</p> <p>ESSE-1212</p>	<p>3-channel Recorder</p> <p>12-channel / 3-channel Recorder</p>
Software	Standard Functions	<p>Dynamic Learning & Searching Function</p> <p>Histogram</p> <p>Lorenz Plot</p> <p>Waveform Superposition Heat Map</p> <p>ST Analysis</p> <p>Atrial Fibrillation Analysis</p> <p>Heart Rate Variability Analysis</p> <p>QT Analysis</p> <p>Page Scan</p> <p>Pacemaker Analysis</p>
	Optional Functions	<p>Waterfall Plot</p> <p>T-wave Alternans Analysis</p> <p>Vector ECG Functions</p> <p>Ventricular Late Potentials Analysis</p>



Automatic ST Evaluation & ST Reanalysis

The ST Elevation/Deviation can be automatically detected and presented in the ST Evaluation Chart, together with the ST color mapping.

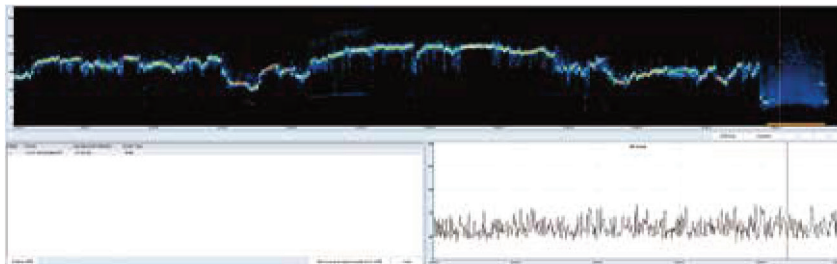
Without interrupting any previous procedures, you can separately modify the J Point, ST Point and T Wave Offset by reanalyzing ST segment.



Automatic AFIB Segments Detection

The atrial fibrillation segments can be automatically detected and presented in the AFIB list, where you can quickly locate and check the distinct period of waveforms.

It also supports one-button operation to delete SVE in AFIB period.



Interactive HRV Analysis

The HRV analysis module brings comprehensive information through Time-domain methods and Frequency-domain methods, presenting Histogram, Trend Graph, Evaluation Table and Spectrum.

