



ESF6-EXPRESS

Fetal & maternal monitor

ESF6

Fetal monitor



INTENSIVE CARES



Foldable color TFT screen

ESF6-Express supports four viewing angles: 15 , 30 , 45 , 60 that give better optic angles for care givers.



Quick setup and simplified workflow

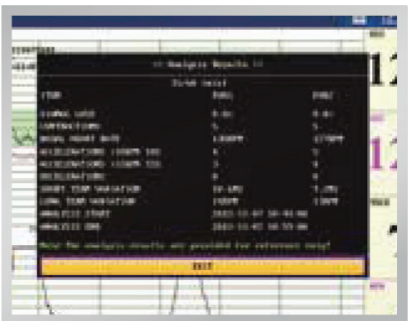
Functional keys and knob provide various short-cuts to achieve functions for clinical use. The 'START' button could be configured to integrate patient info and printing.

This could help the doctor to simplify the workflow and work with 1 button only.



Various printing options

ESF6-Express is compatible with 152 and 150 mm thermal printing paper in either American or International standard. The recording information includes patient info, FHR waveform, TOCO waveform, Fetal movement and so on.



Built-in antepartum CTG analysis

The antepartum CTG analysis provides objective and numerical assessment of CTG for the caregivers' reference and ensures easy access to read FHR patterns.

**User-friendly Design**

- 10.1" foldable TFT color screen
- Compact and portable design
- Probe rack for easy positioning of the transducers

Easy to Read & Operate

- Numeric and waveform display of FHR and TOCO
- Simplified workflow with various short-cuts
- Easy to use menu system ensures fast access to important functions

Advanced FHR Detection Technology

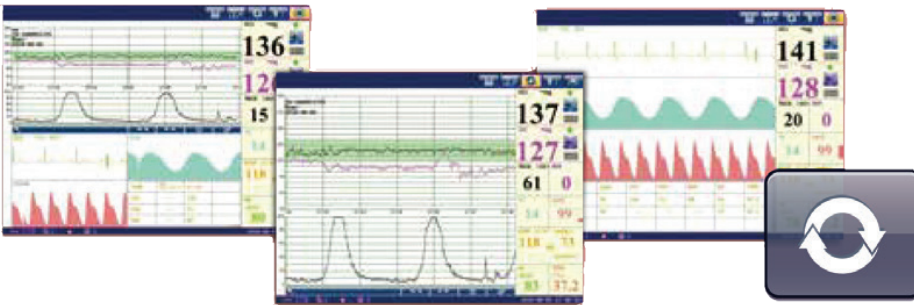
- 1 MHz waterproof sensitive transducer
- Signals Overlap Verification to differentiate twins FHR
- FHR signal quality indicator helps optimize the probe position

Powerful Data Management

- 60 hours built-in memory for seamless monitoring
- MFM-CNS network for remote monitoring
- Software for data management

Multi-display Modes

- Switching among three display modes, user may choose the most suitable one for clinical use.



Optional accessories are the trolley or the wall mount system



Trolley

Wall Mount



Physical Characteristics

Dimensions: 347mm x 330mm x 126mm

Weight: Approx. 6 kg

Ultrasound

Technique: Ultrasound Pulse Doppler with autocorrelation

Pulse Repetition Rate: 2 KHz

Ultrasound Frequency: (1.0+10%)

MHz FHR Measurement Range: 50bpm ~ 240bpm

Resolution: 1bpm

Accuracy: +2 bpm

/ob: < +10%

TOCO

TOCO Range: 0% ~ 100%

Non-linear Error: < +10%

Resolution: 1%

Zero Mode: Automatic / Manual

AFM

Technique: Pulsed Doppler ultrasound

Range: 0 ~ 100 (%)

Resolution: 1%

Display Specifications

Display: 10.1" color TFT-LCD

Resolution: RGB 800 (W) x480 (H)

DECG

Technique: Peak-peak detection technique

DFHR Measurement Range: 30bpm ~ 240 bpm

Resolution: 1bpm

Accuracy: +1 bpm

IUP

Pressure Range: 0 ~ 100mmHg

Non-linear Error: < +3 mmHg

Resolution: 1%

Zero Mode: Automatic/Manual

Recorder

Recording Paper: Z-fold, 150/152mm thermo-sensitive paper

Recording Speed: 1/2/3 cm/min, 25 mm/sec for history data

Power supply

Operating Voltage: 100 - 240V~

Operating Frequency: 50/60Hz

Battery: 14.8V/4400mAh rechargeable Li-ion battery

Maternal Parameters for the ESF6-Express:

Monitor the mother's ECG, HR/PR, NIBP, SpO2, and temperature



ESSE3 srl, Via Garibaldi 30
14022 Castelnuovo D.B. (AT)
Tel +39 011 99 27 706
Fax +39 011 99 27 506
e-mail esse3@chierinet.it
web: www.esse3.dreamgest.com

