



ES-HEM3000

5-Part Differential
Hematology Analyzer



LABORATORY



ES-HEM3000

5-Part Differential Hematology Analyzer



5-Part Differential Hematology Analyzer, 27 parameters

Cod. ES-HEM3000

Advanced Techniques

- Semiconductor laser and flow cytometry
- High-precision injector SP quantitative sampling
- Adaptive flexible contour classification
- Cell thermostatic reaction
- Two-channel cell analysis
- Photoelectric residual reagent detection

Unique Characteristics

- Only 3 original reagent types to guarantee running economically and efficiently
- The smallest sample volume required for special cares
- Four test modes to multiply running choices
- Comprehensive self-maintenance and alarm function
- One key faults removal
- Comprehensive reagent management system

10 μ L of blood Sampling

The whole blood mode need only 15 μ L of blood sample, while the micro pre-dilution mode needs only 10 μ L . The benefits extend the possibility of a back-up test.



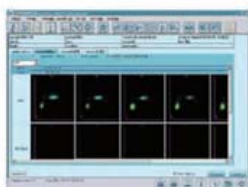
5 part differential





Dual operating system

Common Test Run, Mode Switch, Sampling Methods Select. Diluent Inject and Emergency Treatment insert without PC. Double operating systems increase efficiency and convenience.



Color LCD Screen for status monitoring

Real-time monitoring including running status, measuring mode and reagent volume, etc... Wizard of daily procedures to guarantee correct operations.



Use Friendly Interface for Batch Verification

Multi graphics display provides doctors with great convenience to check and review historical reports.

Economical Test Running

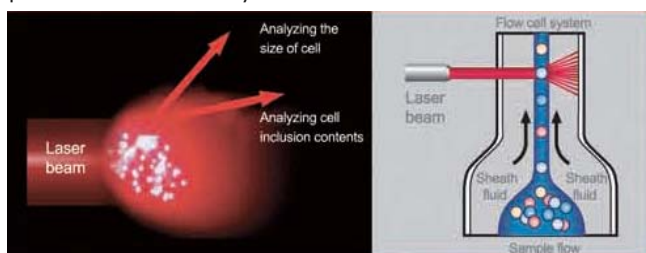
Unique reagent ingredients from original manufacturer make the running more economically and efficiently.

Features

- Support 27 parameters, RBC and PLT histogram
- Minimum blood usage
- Only 10µL blood sampling needed for micro pre-dilution mode
- User-friendly operation interfaces for working mode switch and sampling methods selections.
- High, middle and low level of hematology controls and calibrators
- Three QC methods: X-R, L-J, X-B
- Comprehensive reagent management system
- Auxiliary reagent from original manufacturer to guarantee system performance
- Anomalous cell prompt function

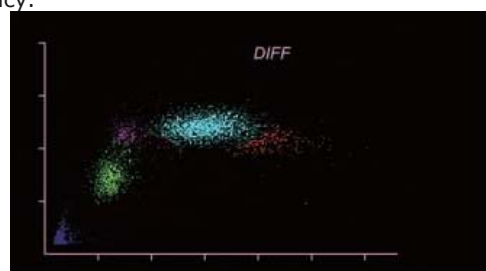
Semiconductor Laser + Flow Cytometry

Advanced differential technology to ensure 5-part WBC's precision and accuracy.



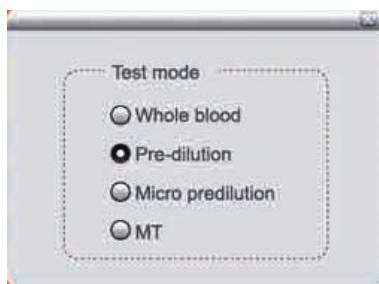
Adaptive Flexible Contour Classification

Dynamic classification adjustment improves analysis accuracy.



Complete Measuring Modes

Four measuring modes + two sampling modes and over ten measurement and analysis schemes.



Unique MT Mode

Specially designed for micro centrifuge tubes, no need to dilute, plus unique algorithm and special distribution ratio of reagents to achieve optimal performance.



Technical Features

Parameters	27 parameters	WBC, RBC, HGB, HCT, MCV, MCH, MCHC, RDW-SD, RDW-CV, PLT, PDW, MPV, PCT, NEU#, NEU%, LYM#, LYM%, MON%, EOS#, EOS#, EOS#, EOS%, BAS#, BAS%
	Research parameters	ALY#, ALY%, LIC#, LIC%
	Histogram	RBC Histogram and PLT Histogram
	Scatter gram	4-Differential Scatter gram and BASO Scatter gram
Principle	Laser flow cytometry analysis, electrical impedance method, colorimetry	
Speed	60 tests/hour	
Sample volume	15µl for whole blood, 20µl for pre-dilution, 10µl for micro pre-dilution, 15µl for MT	
Test mode	Whole blood, pre-dilution, micro pre-dilution, MT	
Sampling methods	Manual	
Data storage capacity	Depends on the capacity of PC hard disk	
Four QC methods	X-R, L-J, X-B, X mean	
Display	5 inches color LCD display and PC display	
Interface	2 x USB 2.0 Host, 1 x USB 2.0 Device, 1 x RS 232	
Input device	PC and Barcode Scanner	
PC configuration	Windows XP, above 1024 x 768 display resolution, USB 2.0 interface, LAN network interface	
Power supply	AC100-240, 50 Hz / 60 Hz	
Power	Rated 250 VA, 150 VA average	
Dimensions (WxHxD)	705 x 470 x 500 mm	
Weight	55 kg	
Operating Environment	15-35°C , 35-85% , 70-110 kPa	



ESSE3 srl, Via Garibaldi 30
14022 Castelnuovo D.B. (AT)
Tel +39 011 99 27 706
Fax +39 011 99 27 506
e-mail esse3@chierinet.it
web: www.esse3-medical.com

